

102 S MAIN STREET

DOVER, PA • 17315

±100 SF OFFICE
W/ CAR SALE LOT

FOR LEASE



JOHN TRONE | ROBERT BEHLER

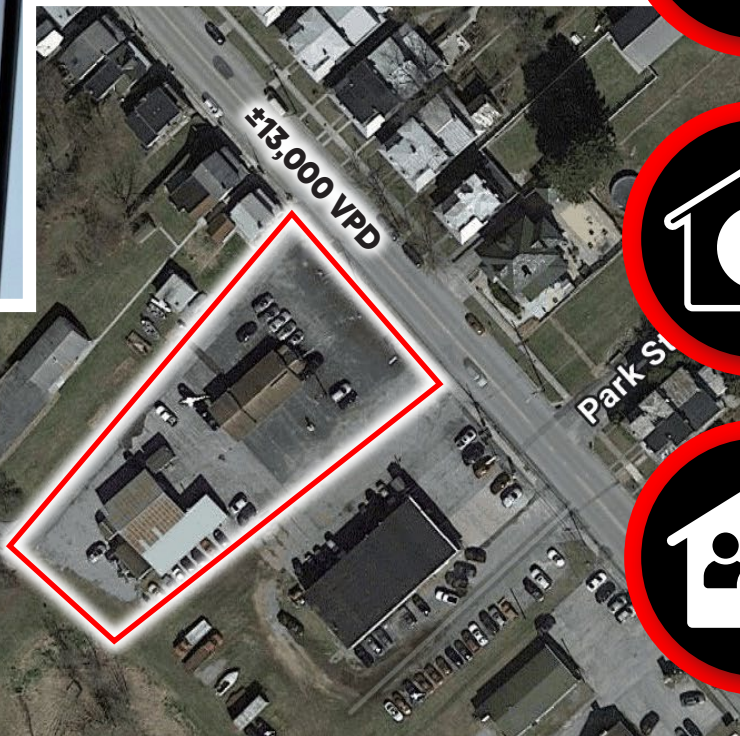
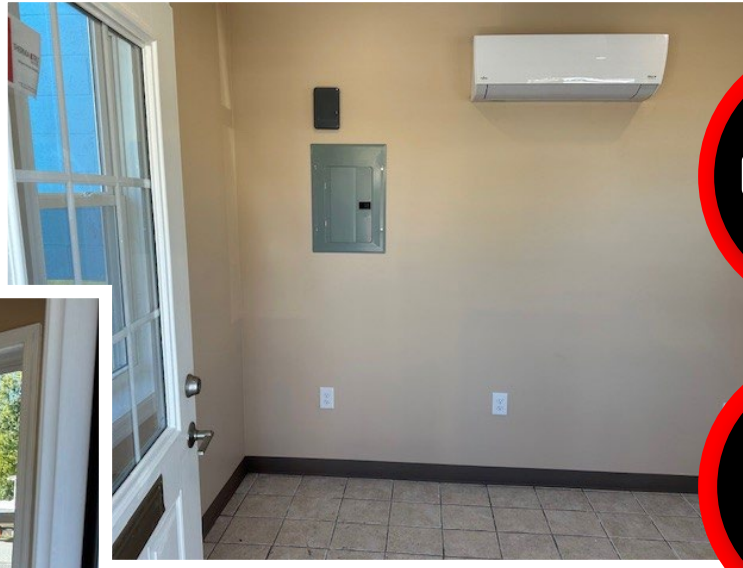
FOR LEASE INFORMATION: 717.843.5555 | LEARN MORE ONLINE AT WWW.BENNETTWILLIAMS.COM



COMMERCIAL BROKERAGE. *Redefined.*

PROPERTY OVERVIEW

- 100 SF office space
- Sales lot + sales office
- 1 bay available in rear



CARLISLE RD: ±13,000 VPD
ROUTE 30: ±64,000 VPD

±100 SF
FOR LEASE



POPULATION
5 MILE- 58,219
7 MILE- 120,744
10 MILE- 222,036



EMPLOYEES
5 MILE- 17,508
7 MILE- 55,004
10 MILE- 94,133

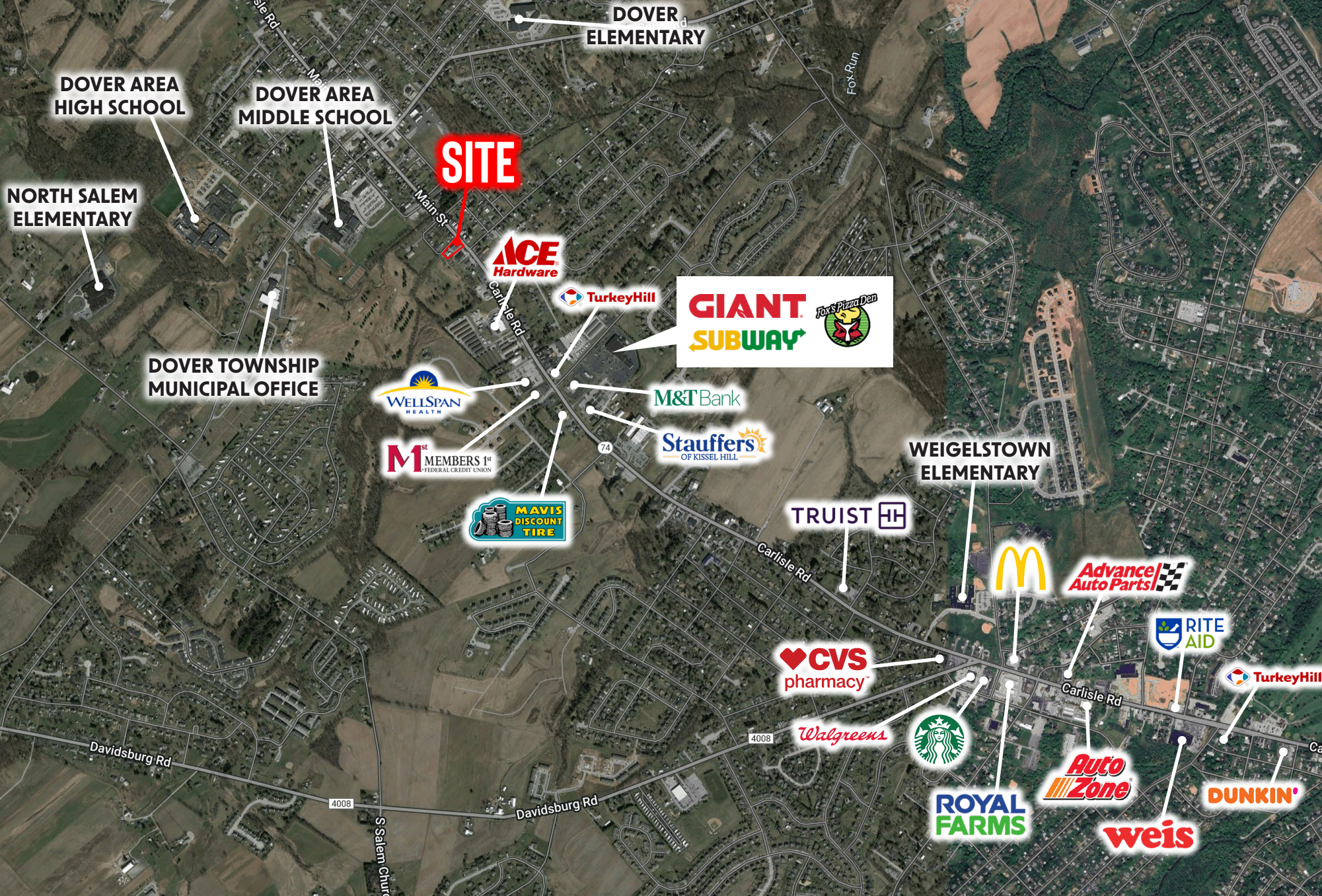


AVERAGE HHI
5 MILE- \$115,365
7 MILE- \$101,943
10 MILE- \$102,765



HOUSEHOLDS
5 MILE- 23,475
7 MILE- 48,166
10 MILE- 88,143

MAREKT OVERVIEW



Bennett Williams

COMMERCIAL REAL ESTATE

OUR LOCATIONS:

YORK OFFICE:

3528 Concord Rd.
York, PA 17402

LANCASTER OFFICE:

150 Farmington Lane, Suite 201
Lancaster, PA 17601

EXTON OFFICE:

1 E. Uwchlan Ave.
Suite 409, Exton, PA 19341

STATE COLLEGE OFFICE:

330 Innovation Blvd, Suite 205
State College, PA 16803

WEST CHESTER OFFICE:

107 E Chestnut St, Suite 1
West Chester, PA 19380

NEW JERSEY OFFICE:

236 E. Route 38, Suite 130
Moorestown, NJ 08057

LISTING AGENTS:



John Trone

john@troneoutdoor.com



Robert Behler

bbehler@bennettwilliams.com

CONTACT US

717.843.5555 | www.bennettwilliams.com

LANDLORD
REPRESENTATION

TENANT
REPRESENTATION

INVESTMENT
SALES

PROPERTY
MANAGEMENT



About Bennett Williams

Since its founding in 1956, Bennett Williams Commercial, Inc. has offered full Commercial Real Estate services to the Central Pennsylvania region and beyond. We have served thousands of commercial, industrial and retail clients as we have grown in size and reputation. With our team of both experienced and knowledgeable executives as well as young and energetic professionals, we have the team to handle any commercial real estate need.

Bennett Williams is a member of the Retail Brokers Network (RBN), a partnership of the best regional retail brokerage firms servicing all of the major markets across the United States. Our affiliates are handpicked ensuring that our clients receive top quality service and representation in any market they need help in, with 61 offices across 65+ markets and 700+ members.

