

302 S GEORGE ST

YORK, PA | 17401

S GEORGE ST ±11,000 VPD

W COLLEGE AVE ±5,000 VPD

±1,600 SF AVAILABLE

FOR LEASE

PROPERTY OVERVIEW

302 S George Street is a 1,600 square-foot ground floor unit located in York, Pennsylvania, situated at a signalized intersection along South George Street and West College Avenue. The space is primed for a retail or office user and is located within the heart of the City of York. South George Street is one of the market's well trafficked corridors and is home to a variety of other retailers.

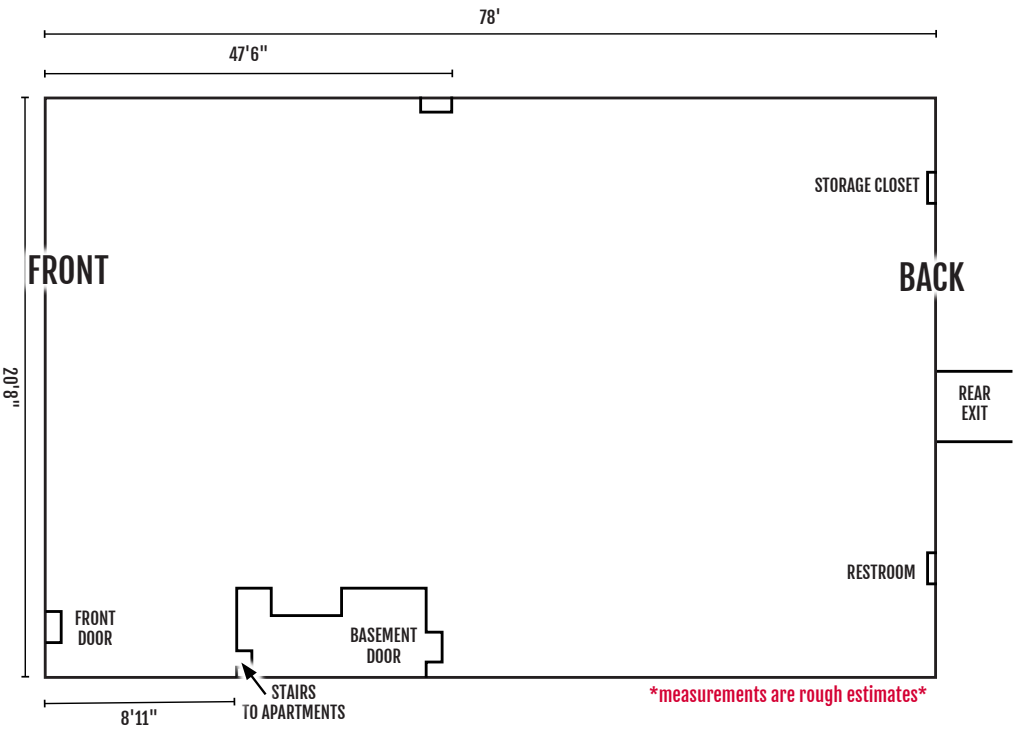


TRAFFIC COUNTS



LOCATION OVERVIEW

The space is ideally positioned on the intersection of South George Street (11,000 VPD) and College Avenue (5,000 VPD), making it easily accessible. Major retailers in the area include McDonald's, Wellspan Health, Pizza Boli's, York Catholic, and more. Additionally, the unit is a block away from the City's main park.



DEMOGRAPHICS	3 MILE	5 MILE	7 MILE
POPULATION	94,007	157,837	222,450
TOTAL EMPLOYEES	50,546	79,585	97,890
AVERAGE HHI	\$87,042	\$102,141	\$103,497
TOTAL HOUSEHOLDS	36,898	61,754	87,190

TRADE AREA OVERVIEW

Adding to the stability of the market are population statistics in a 3-mile radius. Within a 3-mile radius, you will find 94,007 people in 36,898 households with an average annual income of \$87,042. The 5-mile radius demographics are even stronger, showing 157,837 people in 61,754 households with an average annual income of \$102,141. The area daily traffic is also attributed to the ±50,546 employees in the general area.

MARKET AERIAL



York
ACADEMY
Regional Charter School



PIZZA BOLI'S

Johnson
Controls



THE Yorktowne
HOTEL



YORKTOWN MALL
FAMILY DOLLAR
C TOWN TOWN CITITRENDS

DELPHIA HOUSE

ALEXANDER D. GOODE
ELEMENTARY SCHOOL

SITE

YC YORK CATHOLIC



DOLLAR GENERAL



BLAKE SHAFFER | TYLER GETTEL | CALE BRUSO | BRAD ROHRBAUGH | CHAD STINE
FOR LEASE INFORMATION: 717.843.5555 | LEARN MORE ONLINE AT WWW.BENNETTWILLIAMS.COM



ACTIVE MEMBER OF:
RETAIL BROKERS
NETWORK

COMMERCIAL BROKERAGE. *Redefined.*

Bennett Williams

COMMERCIAL REAL ESTATE

OUR LOCATIONS:

YORK OFFICE:

3528 Concord Rd.
York, PA 17402

LANCASTER OFFICE:

150 Farmington Lane, Suite 201
Lancaster, PA 17601

EXTON OFFICE:

1 E. Uwchlan Ave.
Suite 409, Exton, PA 19341

STATE COLLEGE OFFICE:

330 Innovation Blvd, Suite 205
State College, PA 16803

WEST CHESTER OFFICE:

107 E Chestnut St, Suite 1
West Chester, PA 19380

NEW JERSEY OFFICE:

236 E. Route 38, Suite 130
Moorestown, NJ 08057

LISTING AGENTS:



BLAKE SHAFFER

bshaffer@bennettwilliams.com



TYLER GETTEL

tgettel@bennettwilliams.com



CALE BRUSO

cbruso@bennettwilliams.com



BRAD ROHRBAUGH

brohrbaugh@bennettwilliams.com



CHAD STINE

cstine@bennettwilliams.com

CONTACT US

717.843.5555 | www.bennettwilliams.com

LANDLORD
REPRESENTATION

TENANT
REPRESENTATION

INVESTMENT
SALES

PROPERTY
MANAGEMENT



About Bennett Williams

Since its founding in 1956, Bennett Williams Commercial, Inc. has offered full Commercial Real Estate services to the Central Pennsylvania region and beyond. We have served thousands of commercial, industrial and retail clients as we have grown in size and reputation. With our team of both experienced and knowledgeable executives as well as young and energetic professionals, we have the team to handle any commercial real estate need.

Bennett Williams is a member of the Retail Brokers Network (RBN), a partnership of the best regional retail brokerage firms servicing all of the major markets across the United States. Our affiliates are handpicked ensuring that our clients receive top quality service and representation in any market they need help in, with 61 offices across 65+ markets and 700+ members.

