

# 500 MAIN STREET

BELLWOOD, PA • 16617

**SITE**

**FOR SALE**

±3,598 SF + UNFINISHED BASEMENT

## PROPERTY OVERVIEW

500 Main Street is a ±3,598 square-foot free standing building located in Bellwood, Pennsylvania. This former bank building comes equipped with a drive-thru on the north side of the building, as well as an unfinished basement perfect for storage. In addition, the property is also complimented by ample parking space and drive thru access.

## LOCATION OVERVIEW

The space is positioned on Main Street, which is just off of one of Bellwood's main corridors, making it easily accessible. Major retailers in the area include Sheetz, Dollar General, Hometown Market, Bellwood Antis Middle School, and more. Additionally, the building is located right across from Bellwood's Community Park.



## TRADE AREA

Adding to the stability of the market are population's household income statistics in a 5-mile radius. Within a 5-mile radius, you will find 13,601 people with an average annual income of \$92,026. The 10-mile radius demographics show 76,337 people with an average annual income of \$81,184. The area daily traffic is also attributed to the ±13,573 employees in the general area.



**POPULATION**  
5 MILE- 13,601  
7 MILE- 43,463  
10 MILE- 76,337



**EMPLOYEES**  
5 MILE- 2,831  
7 MILE- 13,573  
10 MILE- 31,765



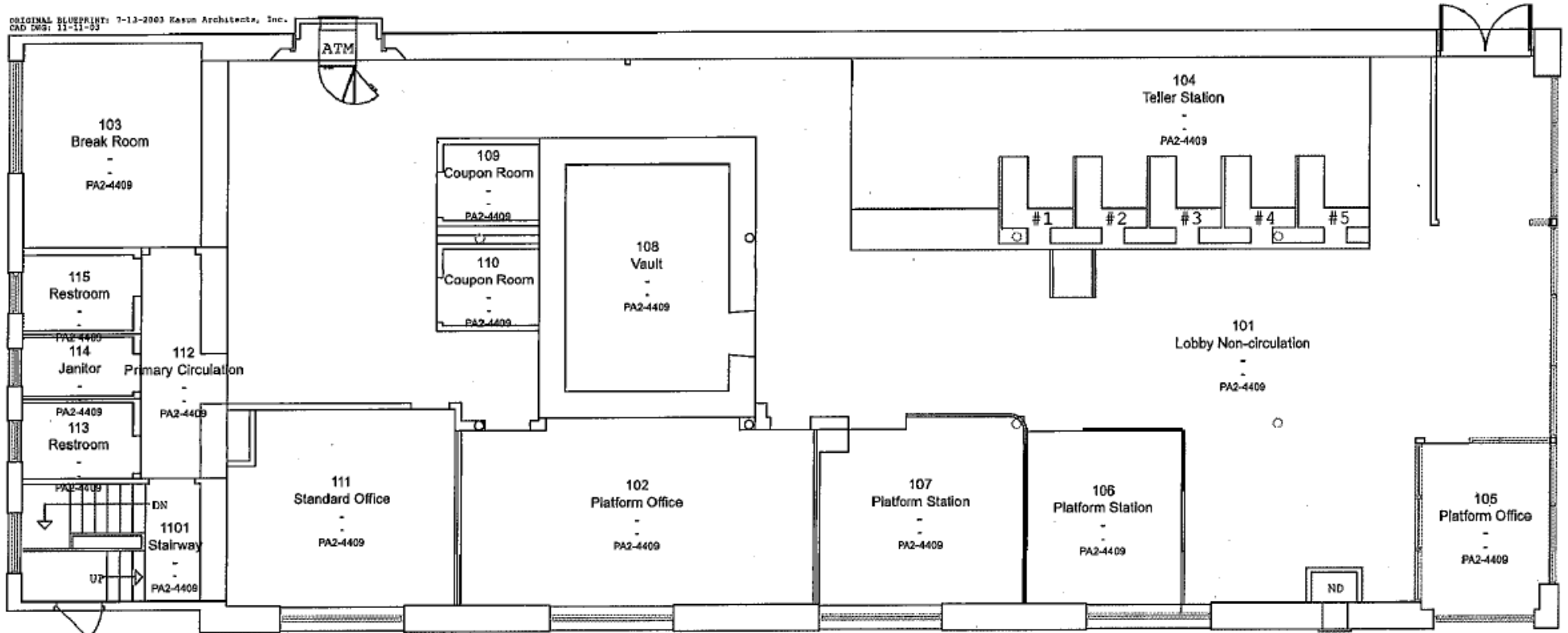
**AVERAGE HHI**  
5 MILE- \$92,026  
7 MILE- \$77,787  
10 MILE- \$81,184



**HOUSEHOLDS**  
5 MILE- 5,594  
7 MILE- 17,903  
10 MILE- 31,922

# FLOOR PLAN (1ST FLOOR)

ORIGINAL BLUEPRINT: 7-13-2003 Kasen Architects, Inc.  
CAD DWG: 13-11-02



## BELLWOOD FIRST FLOOR

500 Main Street, Bellwood, PA 16617

Revised Date: 07/24/2017

NOT TO SCALE



BLAKE SHAFFER | KANDY WEADER

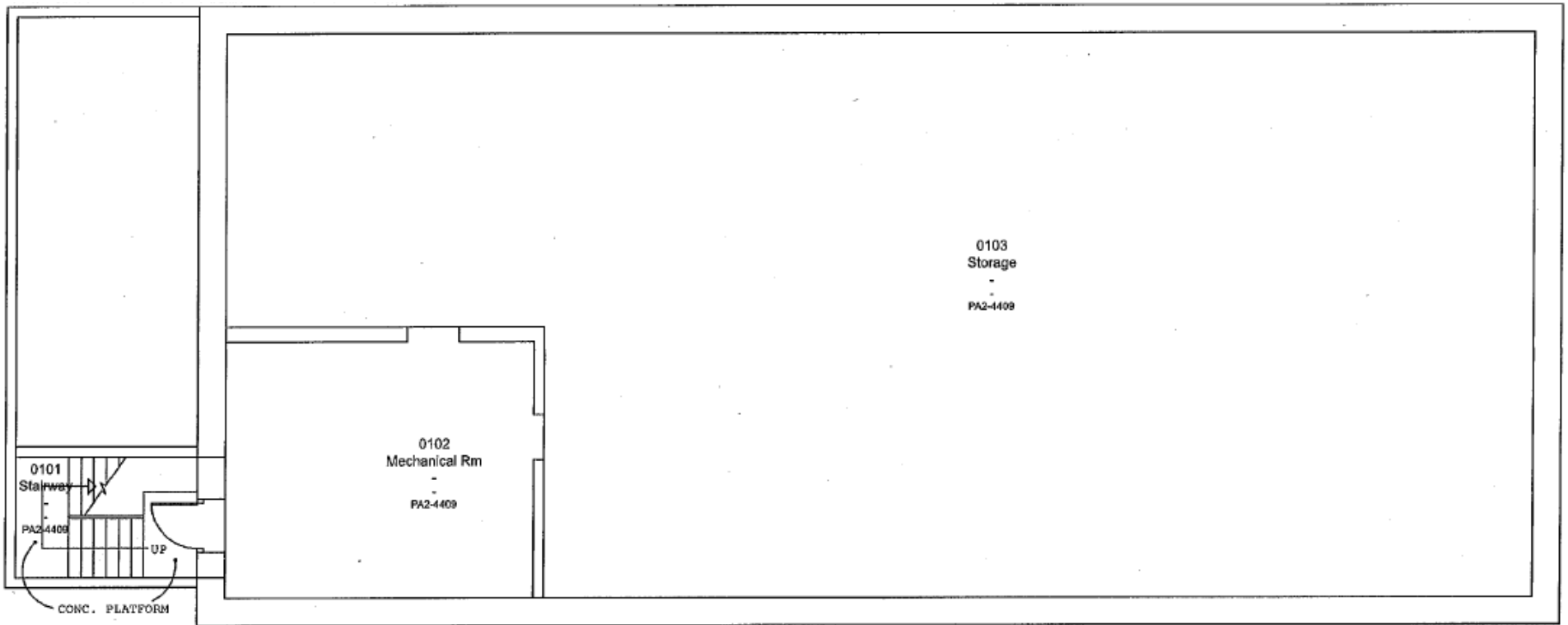
FOR SALE INFORMATION: 717.843.5555 | LEARN MORE ONLINE AT [WWW.BENNETTWILLIAMS.COM](http://WWW.BENNETTWILLIAMS.COM)



ACTIVE MEMBER OF:  
**RETAIL** BROKERS  
NETWORK

COMMERCIAL BROKERAGE. *Redefined.*

# FLOOR PLAN (BASEMENT)



## BELLWOOD BASEMENT

500 Main Street, Bellwood, PA 16617  
Revised Date: 5/8/2007

NOT TO SCALE

# MARKET OVERVIEW



**SITE**

US LUMBER

BELLWOOD ANTIS  
COMMUNITY PARK

**HOMETOWN**  
MARKET

**DOLLAR GENERAL**

BELLWOOD ANTIS  
MIDDLE SCHOOL

**SHEETZ**

UNITED STATES  
POSTAL SERVICE

**RITE**  
AID

SURPLUS  
CITY

# Bennett Williams

COMMERCIAL REAL ESTATE

## OUR LOCATIONS:

### YORK OFFICE:

3528 Concord Rd.  
York, PA 17402

### LANCASTER OFFICE:

150 Farmington Lane, Suite 201  
Lancaster, PA 17601

### EXTON OFFICE:

1 E. Uwchlan Ave.  
Suite 409, Exton, PA 19341

### STATE COLLEGE OFFICE:

330 Innovation Blvd, Suite 205  
State College, PA 16803

### WEST CHESTER OFFICE:

107 E Chestnut St, Suite 1  
West Chester, PA 19380

### NEW JERSEY OFFICE:

236 E. Route 38, Suite 130  
Moorestown, NJ 08057

## LISTING AGENTS:



### Blake Shaffer

bshaffer@bennettwilliams.com



### Kandy Weader

kweader@bennettwilliams.com

## CONTACT US

717.843.5555 | [www.bennettwilliams.com](http://www.bennettwilliams.com)

LANDLORD  
REPRESENTATION

TENANT  
REPRESENTATION

INVESTMENT  
SALES

PROPERTY  
MANAGEMENT



## About Bennett Williams

Since its founding in 1956, Bennett Williams Commercial, Inc. has offered full Commercial Real Estate services to the Central Pennsylvania region and beyond. We have served thousands of commercial, industrial and retail clients as we have grown in size and reputation. With our team of both experienced and knowledgeable executives as well as young and energetic professionals, we have the team to handle any commercial real estate need.

Bennett Williams is a member of the Retail Brokers Network (RBN), a partnership of the best regional retail brokerage firms servicing all of the major markets across the United States. Our affiliates are handpicked ensuring that our clients receive top quality service and representation in any market they need help in, with 61 offices across 65+ markets and 700+ members.

