

500 MAIN STREET

BELLWOOD, PA • 16617

SITE



FOR SALE

±3,598 SF + UNFINISHED BASEMENT



BLAKE SHAFFER | KANDY WEADER | LUKE HIGGINS

FOR SALE INFORMATION: 717.843.5555 | LEARN MORE ONLINE AT WWW.BENNETTWILLIAMS.COM



ACTIVE MEMBER OF:
RETAIL BROKERS
NETWORK

COMMERCIAL BROKERAGE. *Redefined.*

PROPERTY OVERVIEW

500 Main Street is a ±3,598 square-foot free standing building located in Bellwood, Pennsylvania. This former bank building comes equipped with a drive-thru on the north side of the building, as well as an unfinished basement perfect for storage. In addition, the property is also complimented by ample parking space and drive thru access.

LOCATION OVERVIEW

The space is positioned on Main Street, which is just off of one of Bellwood's main corridors, making it easily accessible. Major retailers in the area include Sheetz, Dollar General, Hometown Market, Bellwood Antis Middle School, and more. Additionally, the building is located right across from Bellwood's Community Park.



TRADE AREA

Adding to the stability of the market are population's household income statistics in a 5-mile radius. Within a 5-mile radius, you will find 13,601 people with an average annual income of \$92,026. The 10-mile radius demographics show 76,337 people with an average annual income of \$81,184. The area daily traffic is also attributed to the ±13,573 employees in the general area.



POPULATION
5 MILE- 13,601
7 MILE- 43,463
10 MILE- 76,337



EMPLOYEES
5 MILE- 2,831
7 MILE- 13,573
10 MILE- 31,765



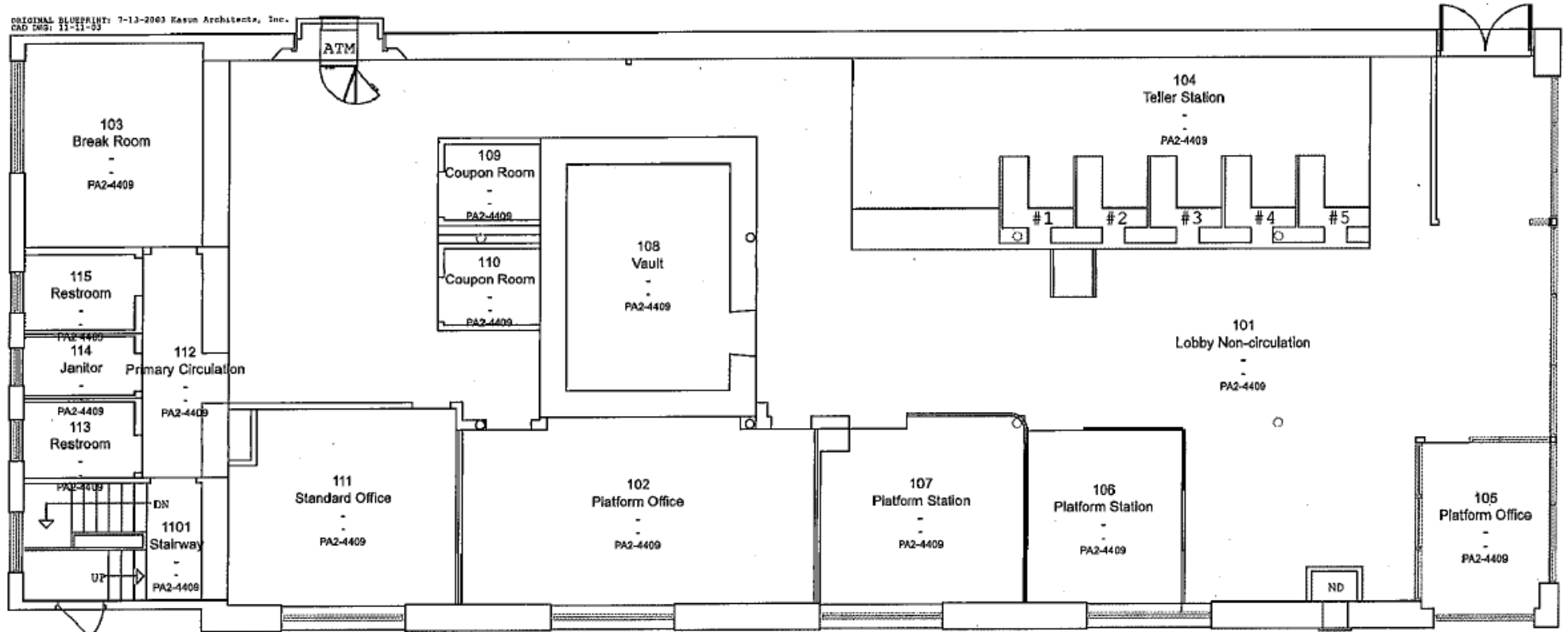
AVERAGE HHI
5 MILE- \$92,026
7 MILE- \$77,787
10 MILE- \$81,184



HOUSEHOLDS
5 MILE- 5,594
7 MILE- 17,903
10 MILE- 31,922

FLOOR PLAN (1ST FLOOR)

ORIGINAL BLUEPRINT: 7-13-2003 Kasen Architects, Inc.
CAD DWG: 13-11-02



BELLWOOD FIRST FLOOR

500 Main Street, Bellwood, PA 16617

Revised Date: 07/24/2017

NOT TO SCALE



BLAKE SHAFFER | KANDY WEADER | LUKE HIGGINS

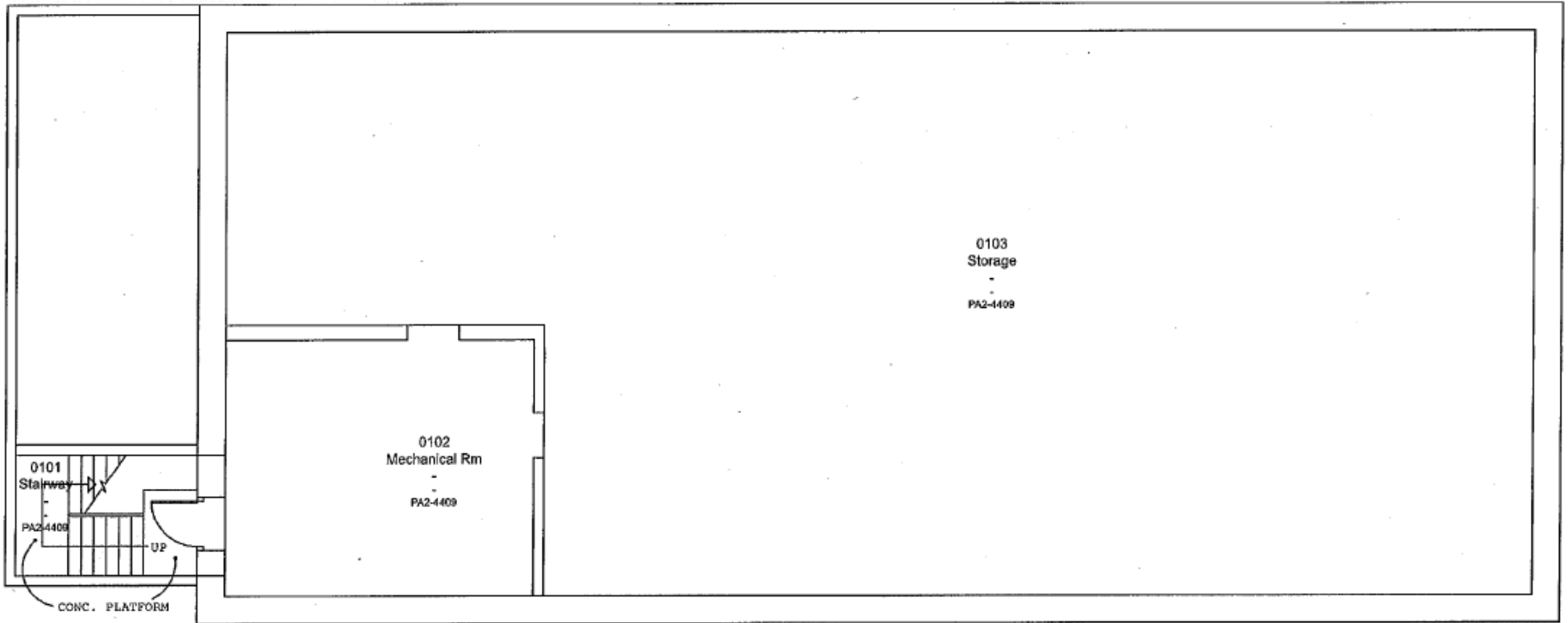
FOR SALE INFORMATION: 717.843.5555 | LEARN MORE ONLINE AT WWW.BENNETTWILLIAMS.COM



ACTIVE MEMBER OF:
RETAIL BROKERS
NETWORK

COMMERCIAL BROKERAGE. *Redefined.*

FLOOR PLAN (BASEMENT)



BELLWOOD BASEMENT

500 Main Street, Bellwood, PA 16617
Revised Date: 5/8/2007

NOT TO SCALE

MARKET OVERVIEW



SITE

US LUMBER

BELLWOOD ANTIS
COMMUNITY PARK

**HOMETOWN
MARKET**

DOLLAR GENERAL

BELLWOOD ANTIS
MIDDLE SCHOOL

SHEETZ

UNITED STATES
POSTAL SERVICE

**RITE
AID**

SURPLUS
CITY

Bennett Williams

COMMERCIAL REAL ESTATE

OUR LOCATIONS:

YORK OFFICE:

3528 Concord Rd.
York, PA 17402

LANCASTER OFFICE:

150 Farmington Lane, Suite 201
Lancaster, PA 17601

EXTON OFFICE:

1 E. Uwchlan Ave.
Suite 409, Exton, PA 19341

STATE COLLEGE OFFICE:

330 Innovation Blvd, Suite 205
State College, PA 16803

WEST CHESTER OFFICE:

107 E Chestnut St, Suite 1
West Chester, PA 19380

NEW JERSEY OFFICE:

236 E. Route 38, Suite 130
Moorestown, NJ 08057

LISTING AGENTS:



Blake Shaffer

bshaffer@bennettwilliams.com



Kandy Weader

kweader@bennettwilliams.com



Luke Higgins

lhiggins@bennettwilliams.com

CONTACT US

717.843.5555 | www.bennettwilliams.com

LANDLORD
REPRESENTATION

TENANT
REPRESENTATION

INVESTMENT
SALES

PROPERTY
MANAGEMENT



About Bennett Williams

Since its founding in 1956, Bennett Williams Commercial, Inc. has offered full Commercial Real Estate services to the Central Pennsylvania region and beyond. We have served thousands of commercial, industrial and retail clients as we have grown in size and reputation. With our team of both experienced and knowledgeable executives as well as young and energetic professionals, we have the team to handle any commercial real estate need.

Bennett Williams is a member of the Retail Brokers Network (RBN), a partnership of the best regional retail brokerage firms servicing all of the major markets across the United States. Our affiliates are handpicked ensuring that our clients receive top quality service and representation in any market they need help in, with 61 offices across 65+ markets and 700+ members.

