

NEW RETAIL REDEVELOPMENT

2810 MEMORIAL HWY | SHAVERTOWN, PA • 18708



NEARBY RETAILERS



DOLLAR GENERAL



±1,500-14,564 SF
FOR LEASE

PROPOSED ELEVATION CONCEPT



ADAM HAGERMAN | CALE BRUSO | BRAD ROHRBAUGH | CHAD STINE

FOR PROPERTY INFORMATION: 717.843.5555 | LEARN MORE ONLINE AT WWW.BENNETTWILLIAMS.COM

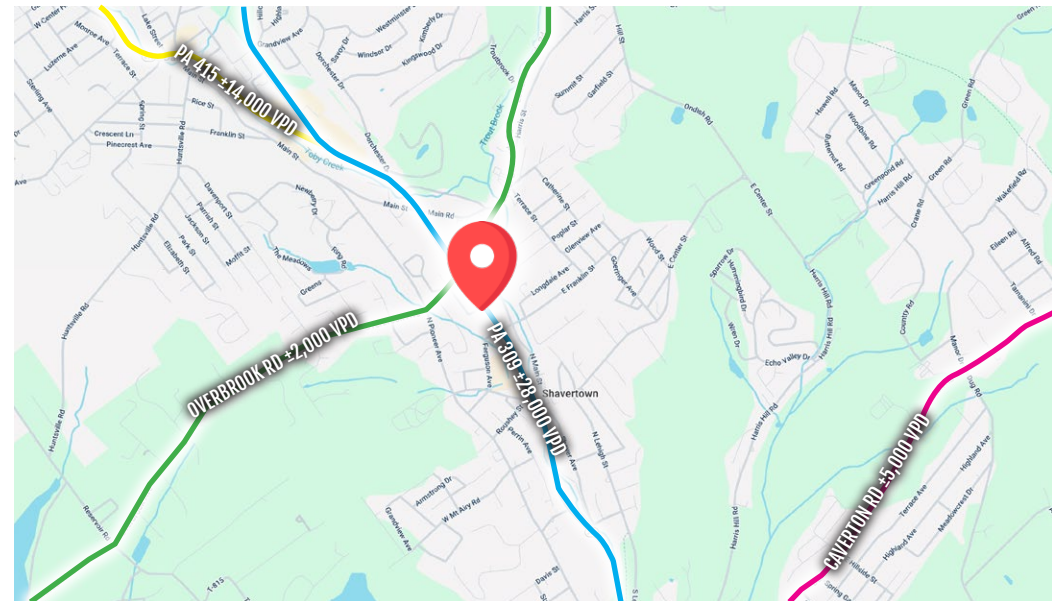


COMMERCIAL BROKERAGE. *Redefined.*

REDEVELOPMENT COMING SOON!

PROPERTY OVERVIEW

Join Luzerne County's newest retail center! This redevelopment project will convert this high profile former Rite Aid into a multi-tenant retail center. With flexible square footages, the building will provide new storefronts and visible frontage to Rt. 309. The site has easy access from a signalized intersection with strong traffic counts which puts you in close proximity to major retailers and community traffic generators like Misericordia University. Once renovated, the center will feature two large endcaps, including one with a proposed drive-thru.



DEMOGRAPHICS	3 MILE	5 MILE	7 MILE
POPULATION	18,274	55,188	139,353
TOTAL EMPLOYEES	6,195	15,975	42,551
AVERAGE HHI	\$131,820	\$102,183	\$89,396
TOTAL HOUSEHOLDS	7,263	23,772	58,102



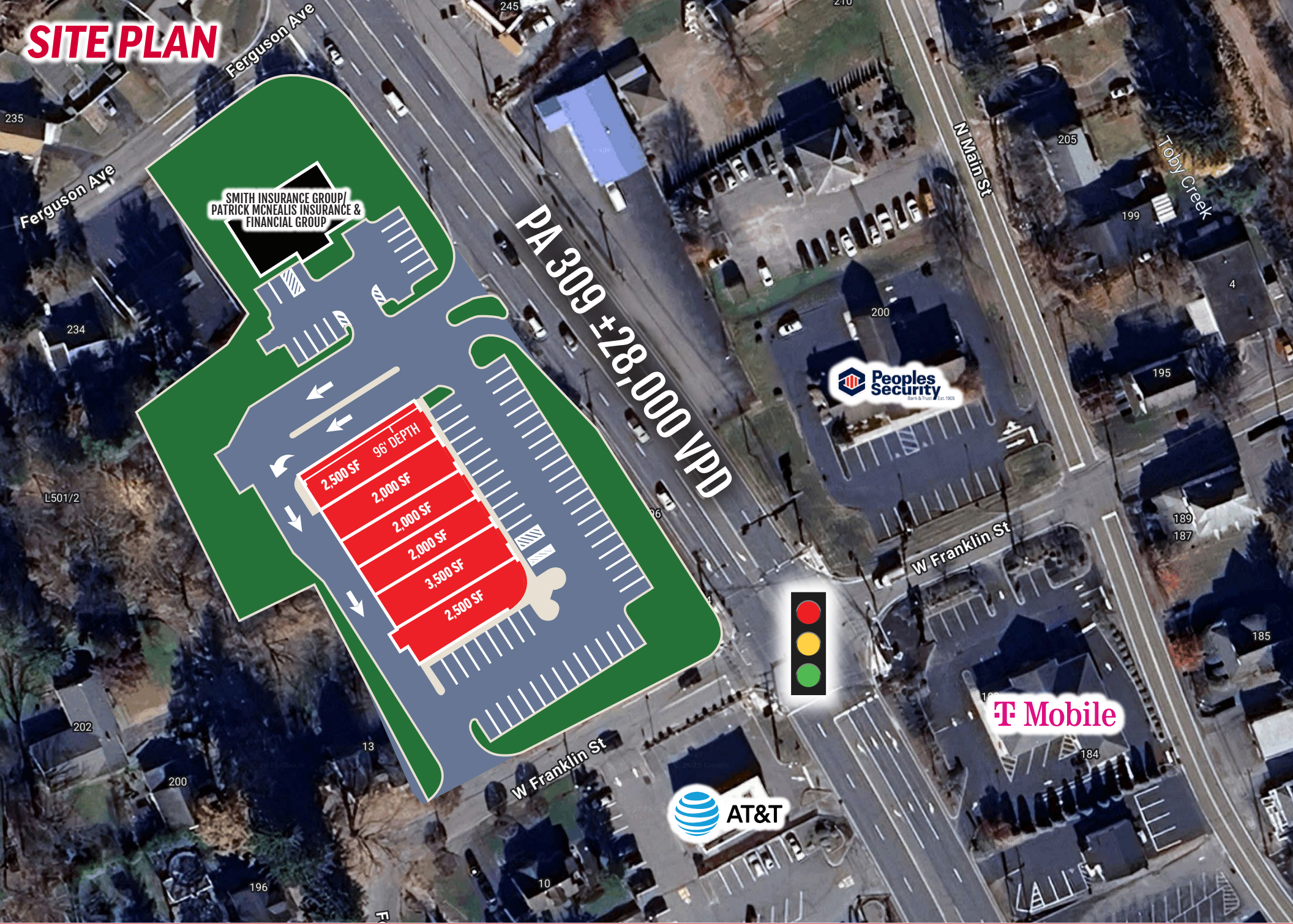
ADAM HAGERMAN | CALE BRUSO | BRAD ROHRBAUGH | CHAD STINE

FOR PROPERTY INFORMATION: 717.843.5555 | LEARN MORE ONLINE AT WWW.BENNETTWILLIAMS.COM



COMMERCIAL BROKERAGE. *Redefined.*

SITE PLAN





MARKET AERIAL



SITE

SHEETZ



ADAM HAGERMAN | CALE BRUSO | BRAD ROHRBAUGH | CHAD STINE
FOR PROPERTY INFORMATION: 717.843.5555 | LEARN MORE ONLINE AT WWW.BENNETTWILLIAMS.COM



COMMERCIAL BROKERAGE. *Redefined.*

Bennett Williams

COMMERCIAL REAL ESTATE

OUR LOCATIONS:

YORK OFFICE:

3528 Concord Rd.
York, PA 17402

EXTON OFFICE:

1 E. Uwchlan Ave.
Suite 409, Exton, PA 19341

WEST CHESTER OFFICE:

107 E Chestnut St, Suite 1
West Chester, PA 19380

LANCASTER OFFICE:

150 Farmington Lane, Suite 201
Lancaster, PA 17601

STATE COLLEGE OFFICE:

330 Innovation Blvd, Suite 205
State College, PA 16803

NEW JERSEY OFFICE:

236 E. Route 38, Suite 130
Moorestown, NJ 08057

LISTING AGENTS:



ADAM HAGERMAN

ahagerman@bennettwilliams.com



CALE BRUSO

cbruso@bennettwilliams.com



BRAD ROHRBAUGH

brohrbaugh@bennettwilliams.com



CHAD STINE

cstine@bennettwilliams.com

CONTACT US

717.843.5555 | www.bennettwilliams.com

LANDLORD
REPRESENTATION

TENANT
REPRESENTATION

INVESTMENT
SALES

PROPERTY
MANAGEMENT



About Bennett Williams

Since its founding in 1956, Bennett Williams Commercial, Inc. has offered full Commercial Real Estate services to the Central Pennsylvania region and beyond. We have served thousands of commercial, industrial and retail clients as we have grown in size and reputation. With our team of both experienced and knowledgeable executives as well as young and energetic professionals, we have the team to handle any commercial real estate need.

Bennett Williams is a member of the Retail Brokers Network (RBN), a partnership of the best regional retail brokerage firms servicing all of the major markets across the United States. Our affiliates are handpicked ensuring that our clients receive top quality service and representation in any market they need help in, with 61 offices across 65+ markets and 700+ members.

