

# 2900 OREGON PIKE & 1289 CREEK RD

LITITZ, PA | 17543

**SITE**

**PROPOSED  
DEVELOPMENT  
FOR LEASE**

±30,000 VPD

±31,000 VPD



BLAKE SHAFFER | JUSTIN WILLITS | BRAD ROHRBAUGH | CHAD STINE

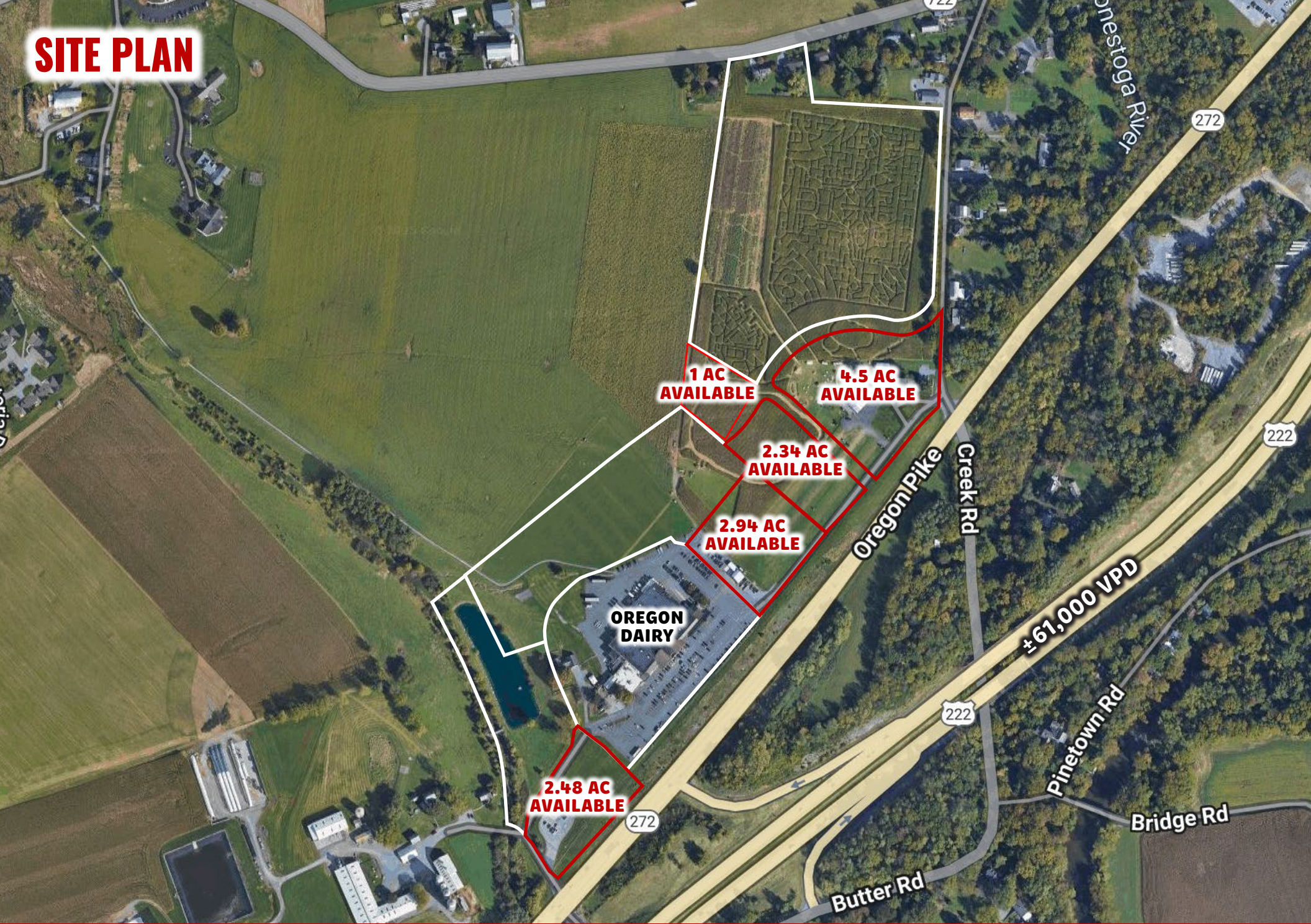
For More Information: 717.843.5555 | Learn more online at [www.bennettwilliams.com](http://www.bennettwilliams.com)



COMMERCIAL BROKERAGE. *Redefined.*



# SITE PLAN



**BLAKE SHAFFER | JUSTIN WILLITS | BRAD ROHRBAUGH | CHAD STINE**  
For More Information: 717.843.5555 | Learn more online at [www.bennettwilliams.com](http://www.bennettwilliams.com)



COMMERCIAL BROKERAGE. *Redefined.*





1 AC



**BLAKE SHAFFER | JUSTIN WILLITS | BRAD ROHRBAUGH | CHAD STINE**  
For More Information: 717.843.5555 | Learn more online at [www.bennettwilliams.com](http://www.bennettwilliams.com)



ACTIVE MEMBER OF:  
**RETAIL** BROKERS  
NETWORK

COMMERCIAL BROKERAGE. *Redefined.*



# PROPERTY OVERVIEW

Now available for lease, Oregon Village offers a unique opportunity to join The Market at Oregon Dairy in a high-visibility, high-traffic corridor in Lititz, PA. The proposed development offers flexibility for a variety of retail, medical, or service-oriented users. Situated along Oregon Pike, just off of the US-222 exit (+/- 61,000 VPD), this property benefits from strong regional demographics, excellent accessibility, and proximity to established residential neighborhoods and commercial centers. This development provides a rare chance to join a growing market in one of Lancaster County's most desirable communities.



DEMOGRAPHICS	3 MILE	5 MILE	7 MILE
POPULATION	30,862	110,905	229,654
EMPLOYEES	8,589	57,144	112,507
AVERAGE HHI	\$139,699	\$129,979	\$117,400
HOUSEHOLDS	11,597	42,936	89,314



**US-222:** ±61,000 VPD



BLAKE SHAFFER | JUSTIN WILLITS | BRAD ROHRBAUGH | CHAD STINE

For More Information: 717.843.5555 | Learn more online at [www.bennettwilliams.com](http://www.bennettwilliams.com)



COMMERCIAL BROKERAGE. *Redefined.*



# PROPERTY OVERVIEW

**SITE**





# Bennett Williams

COMMERCIAL REAL ESTATE

## OUR LOCATIONS:

### YORK OFFICE:

3528 Concord Rd.  
York, PA 17402

### EXTON OFFICE:

1 E. Uwchlan Ave.  
Suite 409, Exton, PA 19341

### WEST CHESTER OFFICE:

107 E Chestnut St, Suite 1  
West Chester, PA 19380

### LANCASTER OFFICE:

150 Farmington Lane, Suite 201  
Lancaster, PA 17601

### STATE COLLEGE OFFICE:

330 Innovation Blvd, Suite 205  
State College, PA 16803

### NEW JERSEY OFFICE:

236 E. Route 38, Suite 130  
Moorestown, NJ 08057

## LISTING AGENTS:



### Blake Shaffer

BShaffer@bennettwilliams.com



### Justin Willits

JWillits@bennettwilliams.com



### Brad Rohrbaugh

BRohrbaugh@bennettwilliams.com



### Chad Stine

CStine@bennettwilliams.com

## CONTACT US

717.843.5555 | [www.bennettwilliams.com](http://www.bennettwilliams.com)

LANDLORD  
REPRESENTATION

TENANT  
REPRESENTATION

INVESTMENT  
SALES

PROPERTY  
MANAGEMENT



## About Bennett Williams

Since its founding in 1956, Bennett Williams Commercial, Inc. has offered full Commercial Real Estate services to the Central Pennsylvania region and beyond. We have served thousands of commercial, industrial and retail clients as we have grown in size and reputation. With our team of both experienced and knowledgeable executives as well as young and energetic professionals, we have the team to handle any commercial real

Bennett Williams is a member of the Retail Brokers Network (RBN), a partnership of the best regional retail brokerage firms servicing all of the major markets across the United States. Our affiliates are handpicked ensuring that our clients receive top quality service and representation in any market they need help in, with 61 offices across 65+ markets and 700+ members.

